



Art 372

montaggio versione dx . assembly right version
montage version droite . montage versión derecha

REV. 00.2017

FOIST0067

Prodotto ed assemblato in Italia / Made and assembled in Italy / Fabriqué et assemblé en Italie / Hecho y montado en Italia

CARATTERISTICHE - FEATURES - CARACTÉRISTIQUES - CARACTERÍSTICAS

Ripiani estraibili reversibili per angolo base, due unità fondo in nobilitato
Extractable and reversible shelves for base corner, two pieces with melaminated bottom
Étagères extractibles pour angle base, deux pièces avec fond mélaminé
Esteras extraíbles y reversibles para ángulo base, dos unidades con fondo melaminado

MINUTERIA INTERNA - FITTINGS - FERRURE - PEQUEÑA CUBIERTA

n°7 6.3x10.5 Vite autofilettante TC a croce / Self tapping screw TC

Vis autotaraudeuse TC / Tornillo autorroscante TC

n°8 4x15 Vite autofilettante TSP a croce / Self tapping screw TSP

Vis autotaraudeuse TSP / Tornillo autorroscante TSP

COMPONENTI - PARTS - COMPOSANTS - COMPONENTES

A. n°2 Ripiani / Shelves / Plateaux / Esteras

B. n°1 Supporto tubo / Pipe support / Support de conduite / Soporte de tubo

C. n°1 Spessore / Thickness / Épaisseur / Espesor

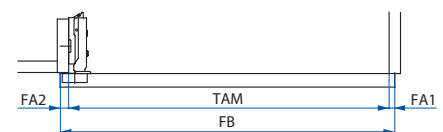
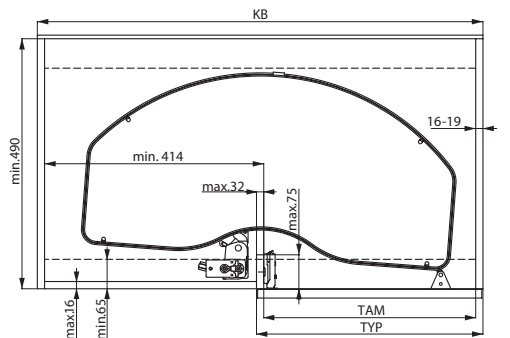
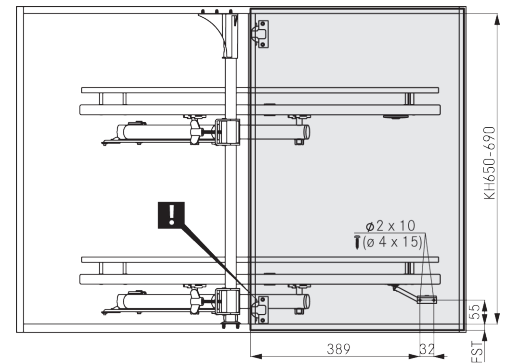
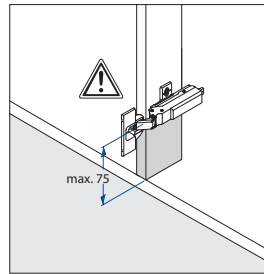
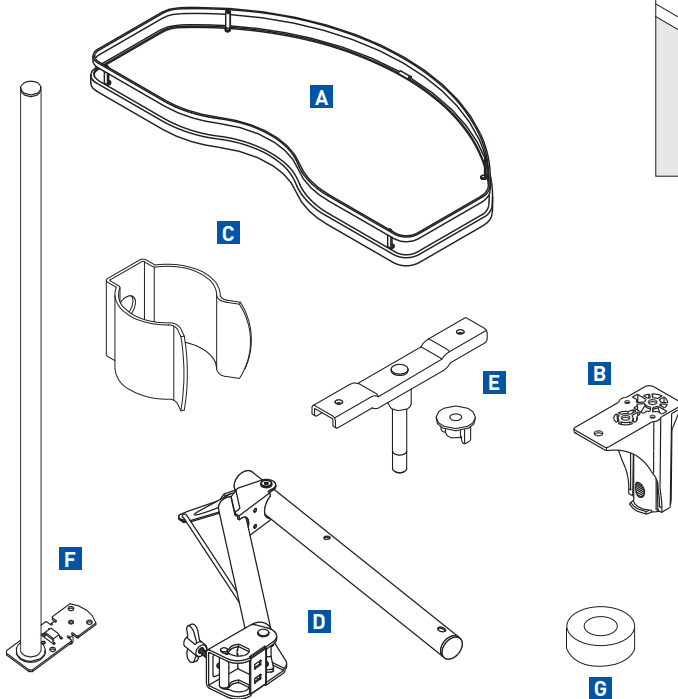
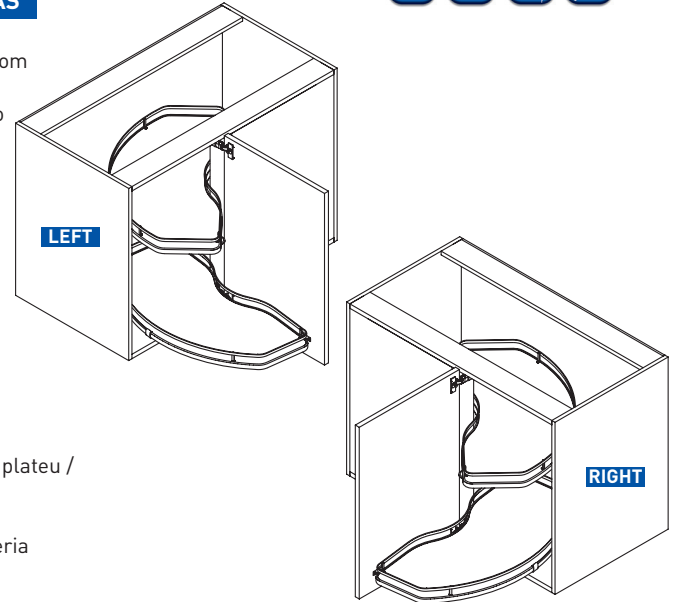
D. n°2 Meccanismo / Mechanism / Mécanisme / Mecanismo

E. n°4 Kit piastra supporto ripiano / Plate shelf support kit / Kit de plaque support du plateau / Kit de placa soporte de estanteria

F. n°1 Tubo / Pipe / Conduite / Tubo

G. n°2 Spessore Ripiano / Shelf thickness / Épaisseur du plateau / Espesor de estanteria

UTENSILERIA • TOOLS



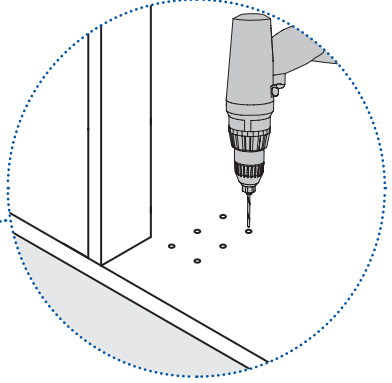
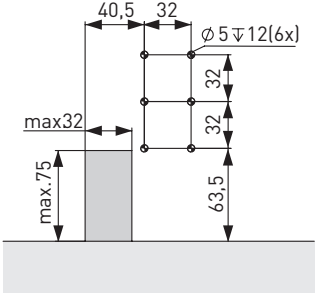
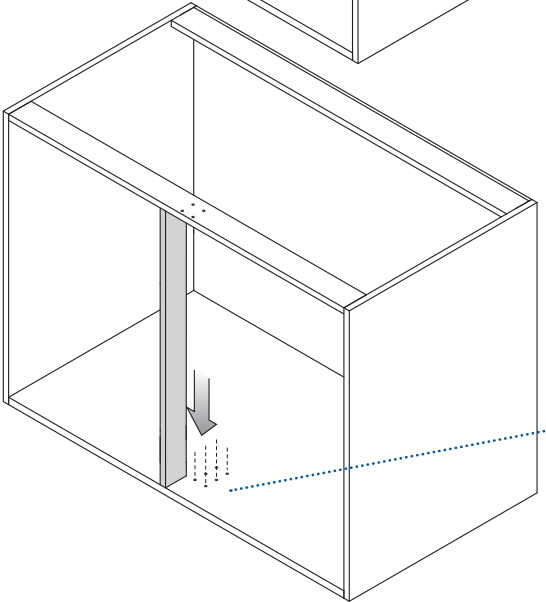
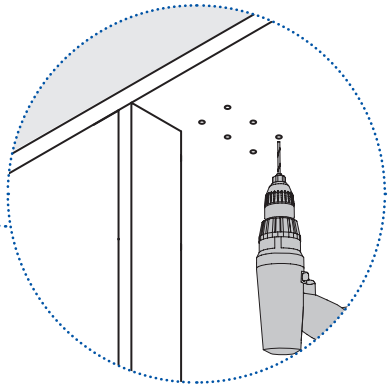
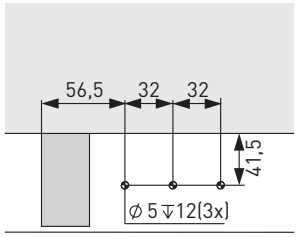
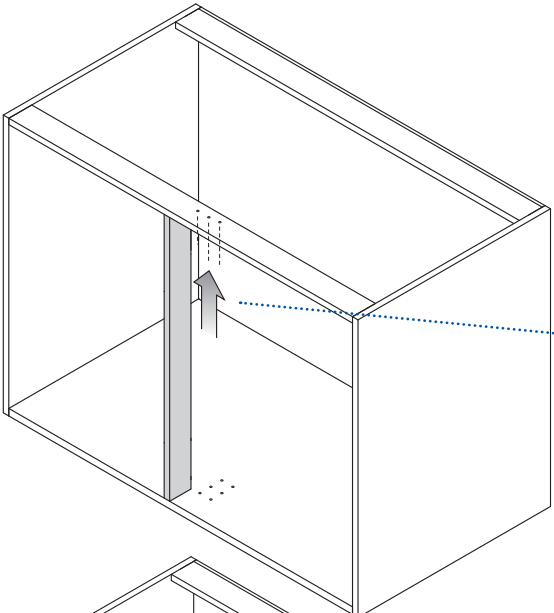
TYP	KB	TAM
450	min. 870	412-418
500	min. 920	462-468
600	min. 1020	562-568

TAM = FB - FA1 - FA2

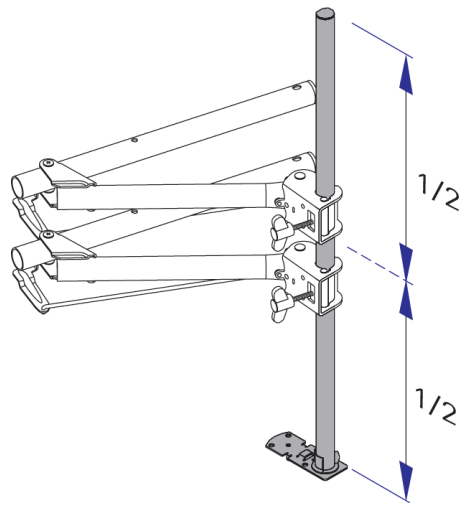
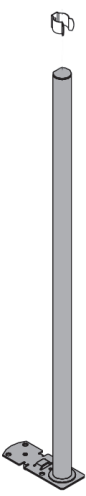
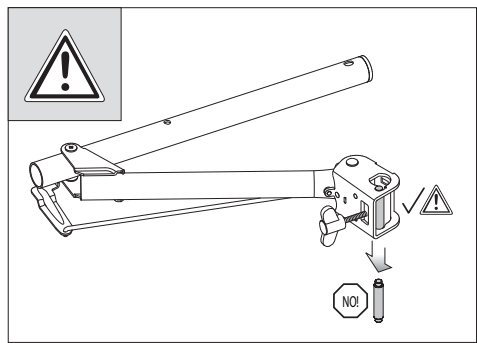
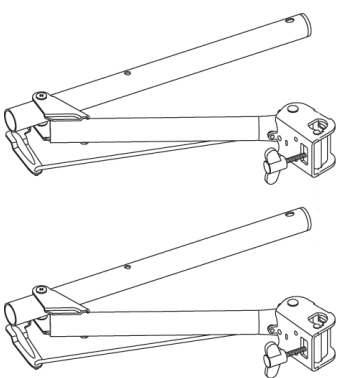
SIGE non sarà responsabile di eventuali danni occorsi, per utilizzo del prodotto difforme da quello per il quale è stato concepito. SIGE will not be responsible for any eventual damage due to a different use from the one it has been made. SIGE ne sera pas responsable pour tous les dommages à cause d'un différent utilisation du produit pour lequel il a été fabriqué. SIGE no sera responsable para cualquier daño debido al uso diferente de lo por el cual un producto ha sido realizado.

FA Frontauflage / Front overlay / Recouvrement façade / Base di appoggio frontale / Cubrimiento / Fronttäckning / Наложение фасада
FB Frontbreite / Width of front / Largeur de la façade / Larghezza del frontale / Ancho del frente / Frontbredd / Ширина фасада
KB Korpusbreite / Cabinet width / Largeur de caisson / Larghezza del mobile / Ancho del módulo / Stombredd / Ширина корпуса
KH Korpusshöhe / Cabinet height / Hauteur du caisson / Altezza mobile / Altura del módulo / Stommens höjd / Высота корпуса
TAM Türanschnittmaß / Door cut-out dimension / Cote échancre porte / Misura di taglio anta / Medida del corte de la puerta / Dörrmått / Размер выреза на двери

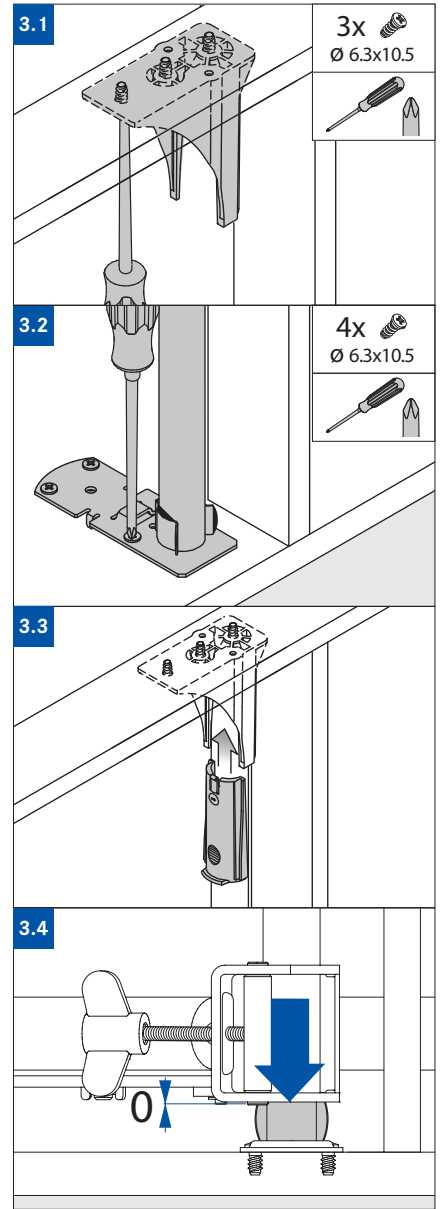
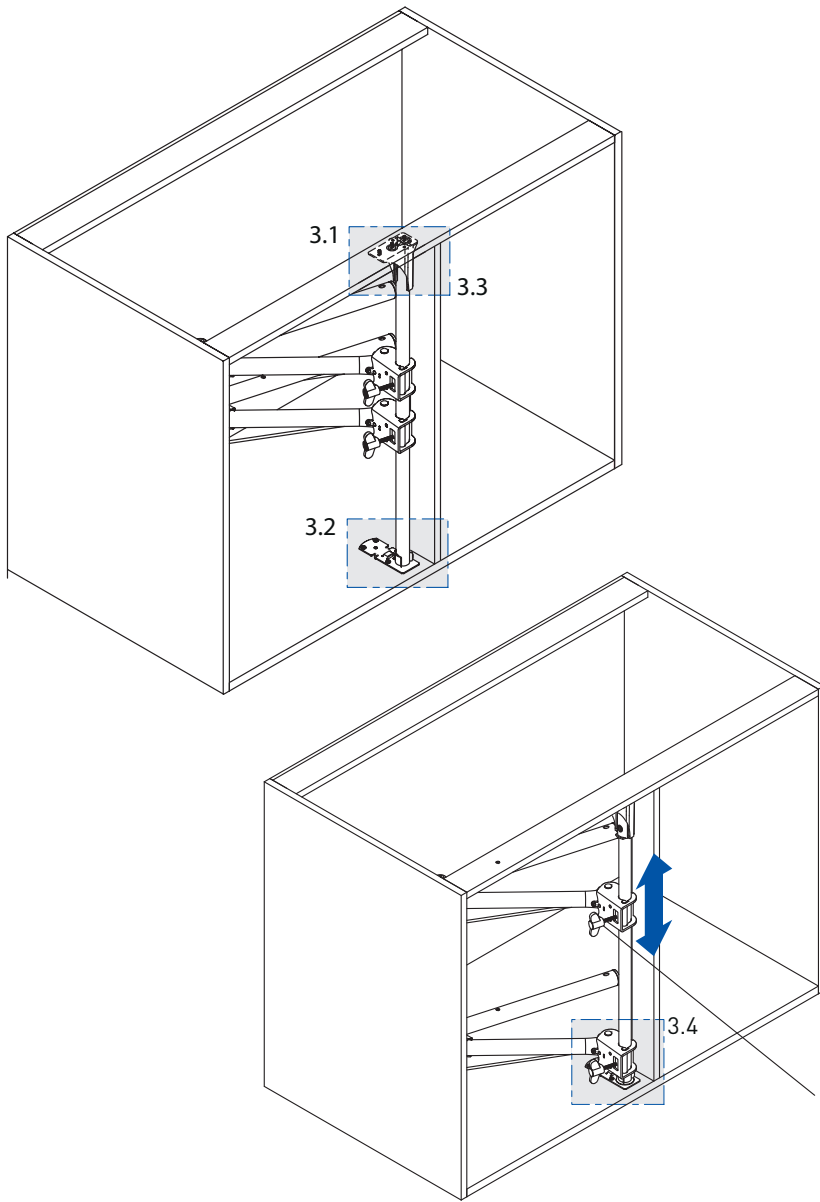
1



2



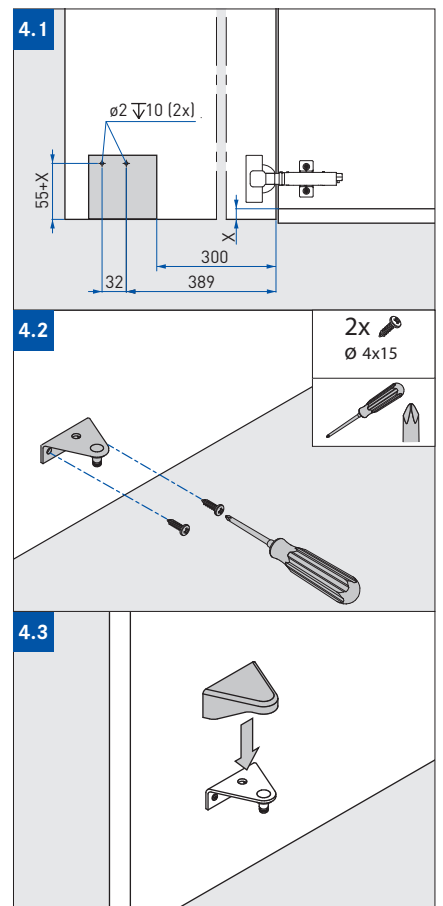
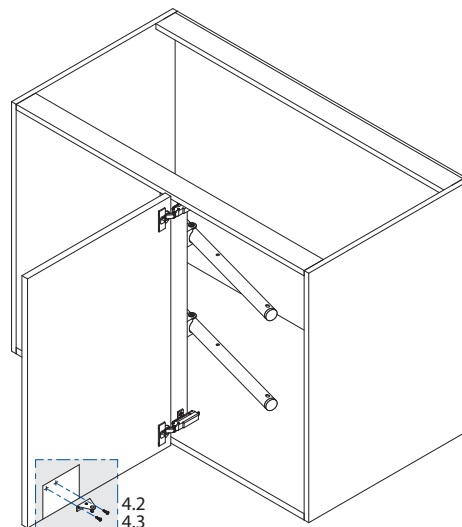
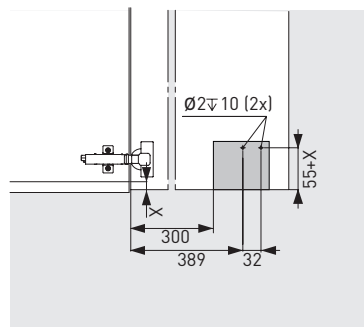
3



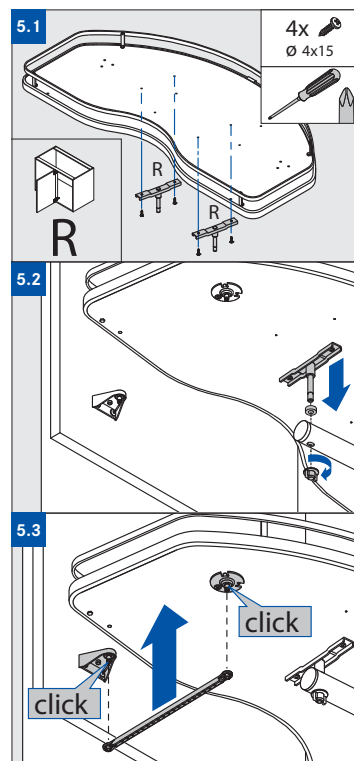
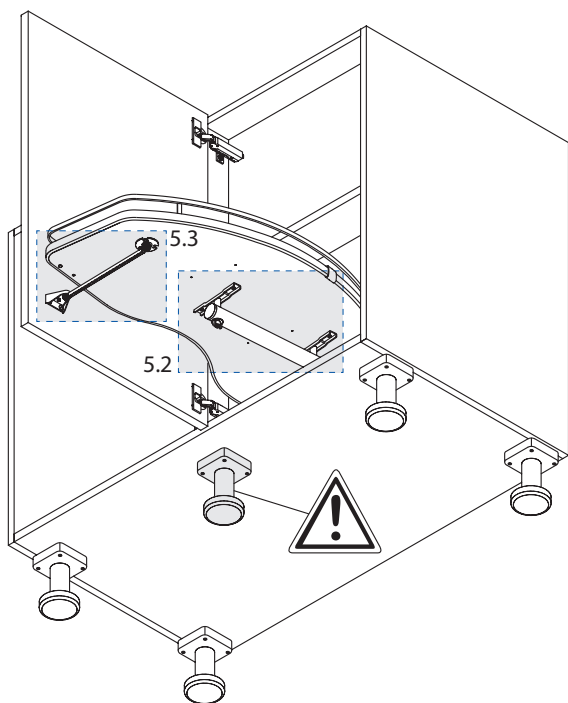
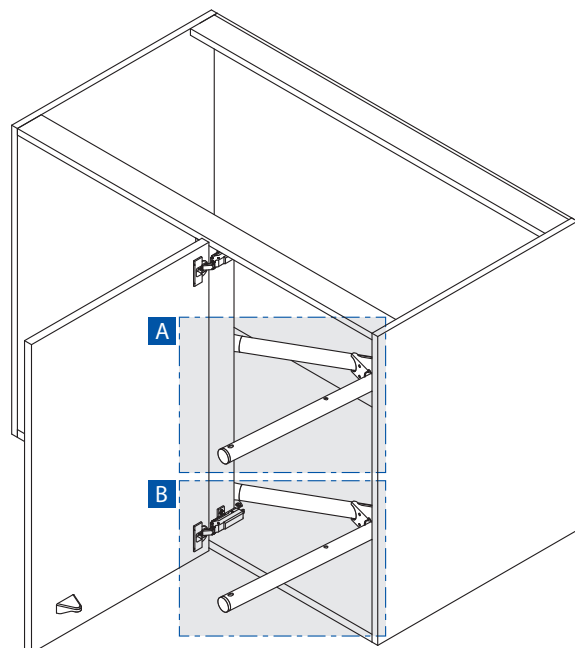
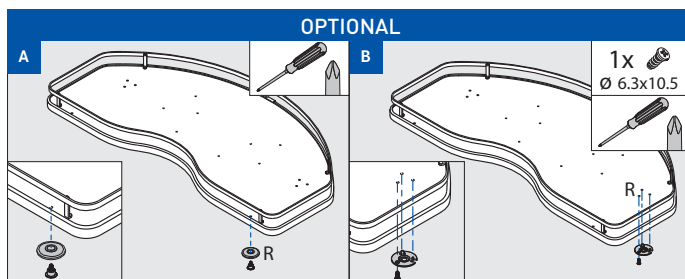
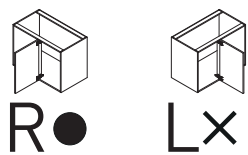
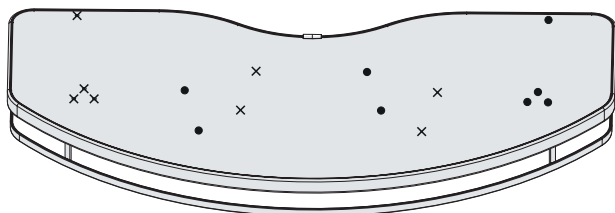
4

OPTIONAL:

Trascinatore antina.
Door bracket.

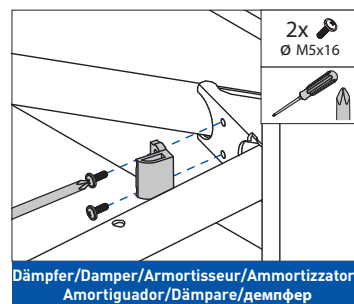
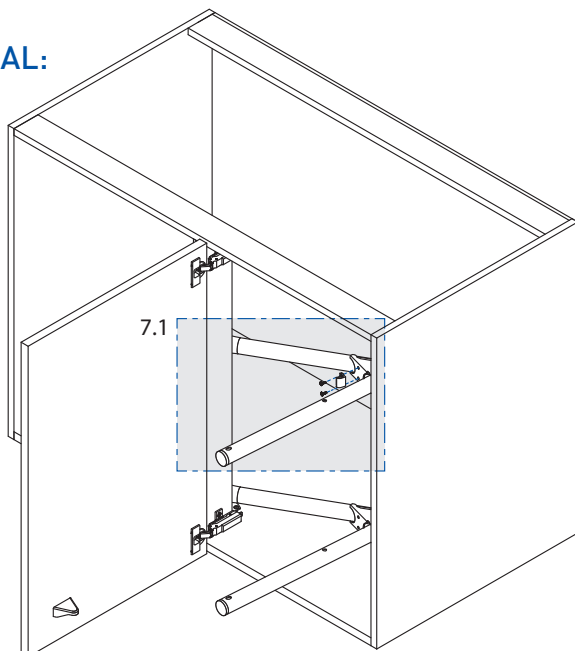


5



6

OPTIONAL:



Dämpfer/Damper/Armortisseur/Ammortizzatore
Amortiguador/Dämpfer/демпфер

Self closing.
Self closing.

